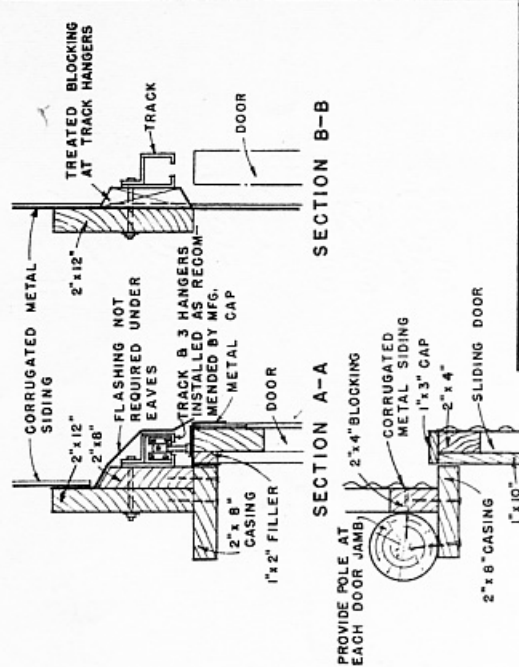
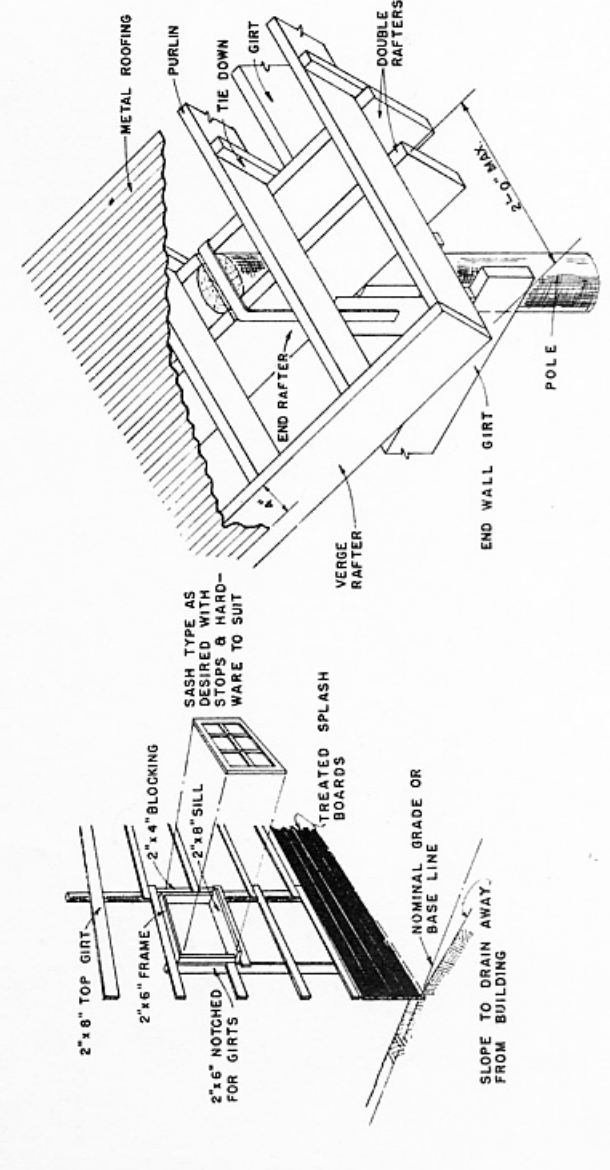


TYPICAL WALL CONSTRUCTION (ROOF FRAMING NOT SHOWN)

TYPICAL FRAMING FOR HINGED DOOR



TYPICAL FRAMING FOR SLIDING DOOR



TYPICAL WINDOW INSTALLATION

ROOF OVERHANG AT ENDWALL (DOUBLE RAFTERS & PURLIN CONSTRUCTION SHOWN) WHEN SHEATHING IS USED INSTEAD OF PURLINS IT MAY BE EXTENDED IN SIMILAR MANNER. PROVIDE BLOCKING BETWEEN END & VERGE RAFTERS IF OVERHANG EXCEEDS 12\"/>

SECTION C-C

SECTION A-A

SECTION B-B

NOTE: EQUIP METAL COVERED BUILDINGS WITH ADEQUATE LIGHTNING PROTECTION SYSTEM IN AREAS WHERE NEEDED. REFER TO FARMERS' BULLETIN NO. 1515, "PROTECTION OF BUILDINGS AND FARM PROPERTY FROM LIGHTNING" AS A GUIDE.