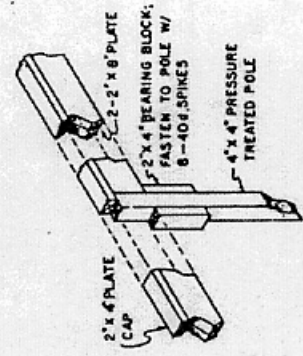
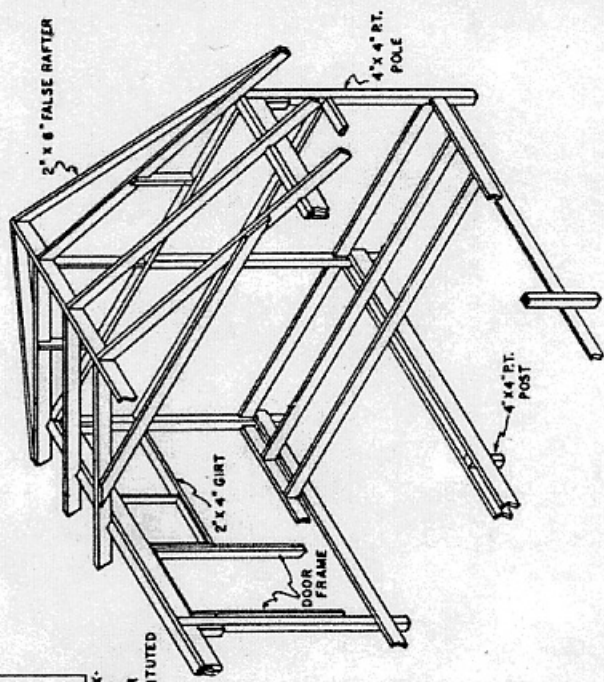


**WINDOW SCHEDULE**

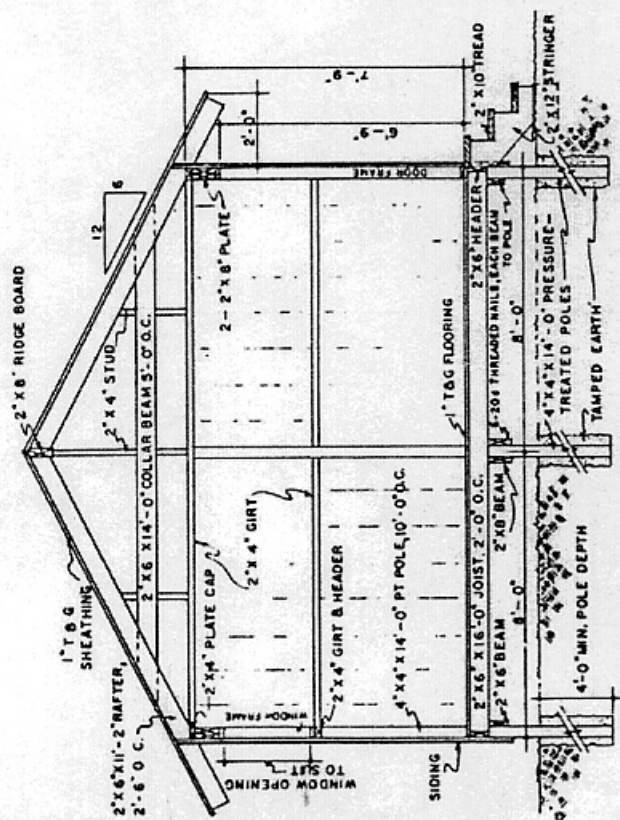
WINDOW	UNIT SIZE	NO. OF UNITS
A	28" x 28"	3
B		
C		
D		
E		
F		

↑ ALL WINDOW UNIT SIZES ARE APPROXIMATE. UNITS ARE INSWINGING & ARE HINGED AT THE TOP OTHER STYLES OR SIZES MAY BE SUBSTITUTED

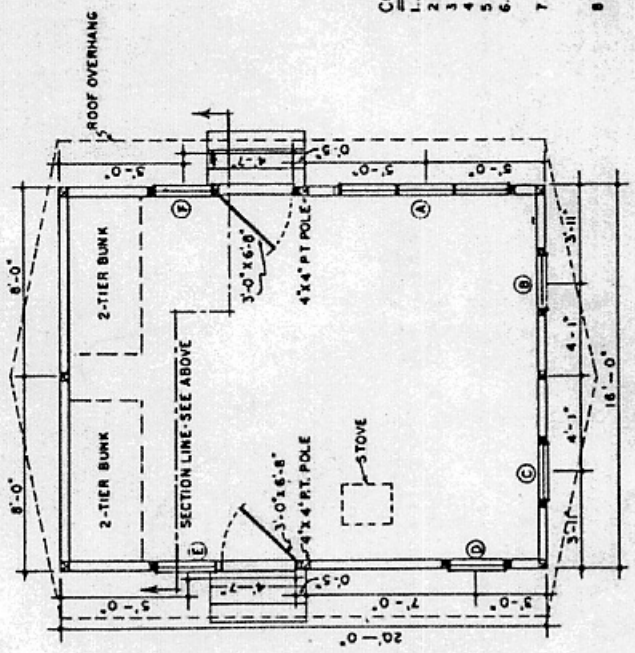


**PLATE - POLE DETAIL**  
NO SCALE

- CONSTRUCTION NOTES**
- THIS DESIGN IS BASED ON THE USE OF ROUGH-SAWN EASTERN HEMLOCK
  - DESIGN ROOF LOAD 40 LBS. PER SQ. FT.
  - DESIGN FLOOR LOAD 40 LBS. PER SQ. FT.
  - LENGTHS OF POLES ARE DEPENDENT ON SLOPE OF BUILDING SITE
  - ALL FRAMING NAILS SHOULD BE HARDENED AND THREADED.
  - ALL WOOD IN CONTACT WITH EARTH SHOULD BE PRESURE TREATED WITH A PRESERVATIVE.
  - ROUGH-SAWN BOARD & BATTEN SIDING WITH 10" TO 12" WIDE BOARDS & 2" TO 3" WIDE BATTENS ON THE BETWEEN-BOARD CRACKS IS ATTRACTIVE. OTHER SIDING MATERIALS MAY BE USED IF DESIRED.
  - INTERIOR FINISH IS LEFT TO THE BUILDERS DISCRETION.



**SECTION A-A**  
0 1 2 3 4 FT.



**PLAN**  
0 2 4 6 FT.

**FRAMING PERSPECTIVE**  
0 2 4 6 FT.