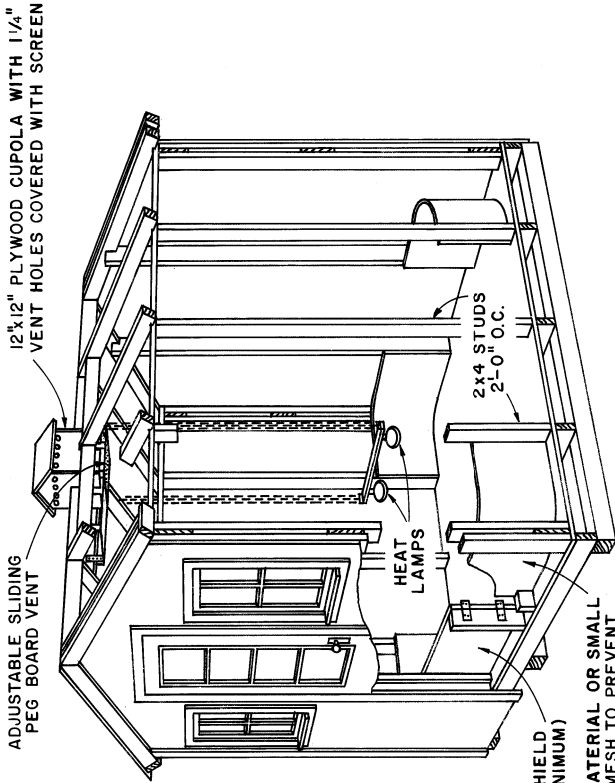


ADJUSTABLE SLIDING PEG BOARD VENT

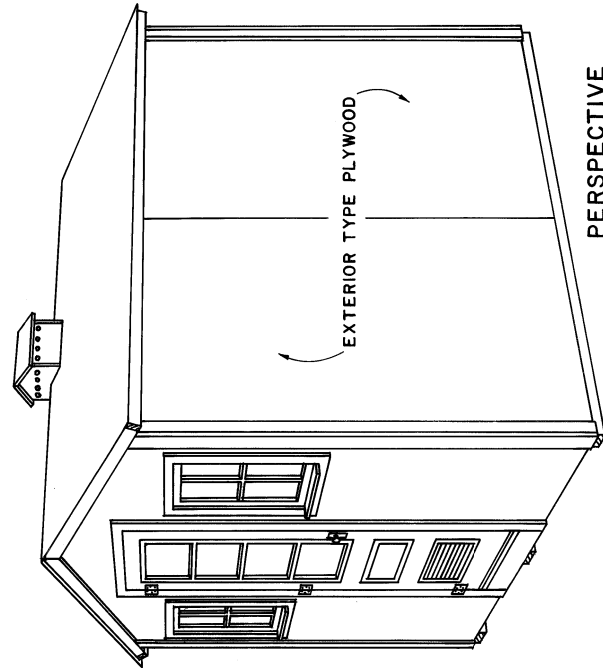


**CUTAWAY VIEW**  
OF 8x8' BROODER HOUSE

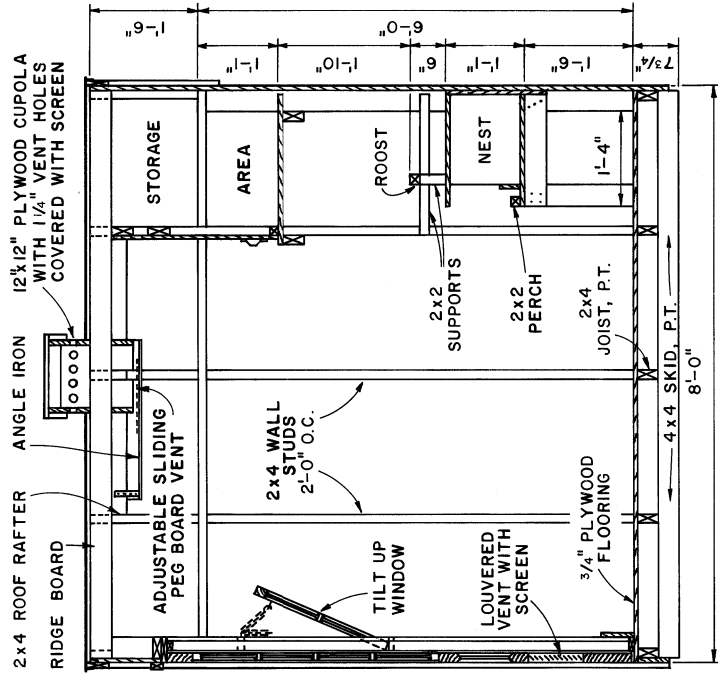
NOTE:  
BASED ON: UNIV. OF WISCONSIN  
PLANS NO. WP 5702, 5703, 5704  
AND 5705.  
CONSULT LOCAL HEALTH AND  
BUILDING CODE AUTHORITIES  
BEFORE STARTING CONSTRUCTION.

COOPERATIVE EXTENSION WORK IN  
AGRICULTURE AND HOME ECONOMICS  
STATE OF TENNESSEE  
UNIVERSITY OF TENNESSEE  
AND  
UNITED STATES DEPARTMENT OF AGRICULTURE COOPERATING

**POULTRY & PIGEON HOUSES**  
BROODERS-LAYERS-BANTAMS  
WISC. '75 6232 SHEET 1 OF 2



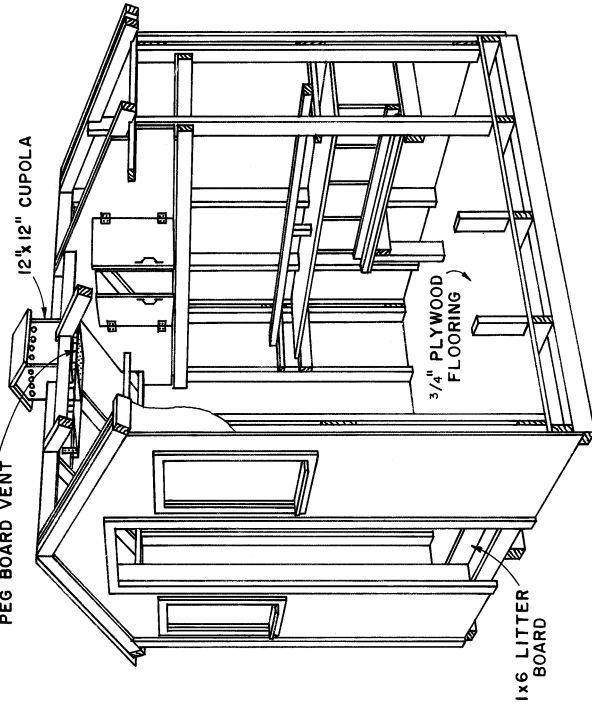
**PERSPECTIVE**  
BROODER HOUSE  
LAYING HOUSE  
CHICKEN HOUSE-BANTAMS  
PIGEON HOUSE



**SECTION**  
LAYING HOUSE

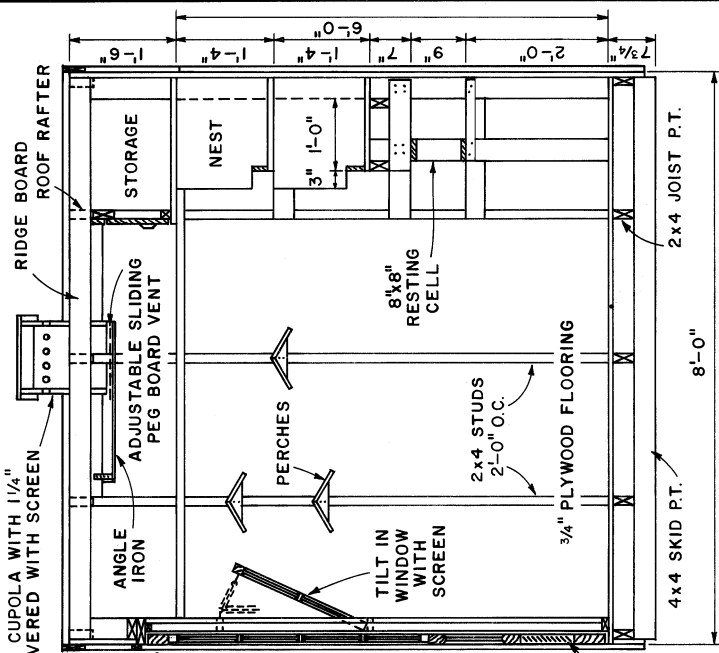
NOTE:  
P.T.=PRESSURE TREATED

ADJUSTABLE SLIDING PEG BOARD VENT



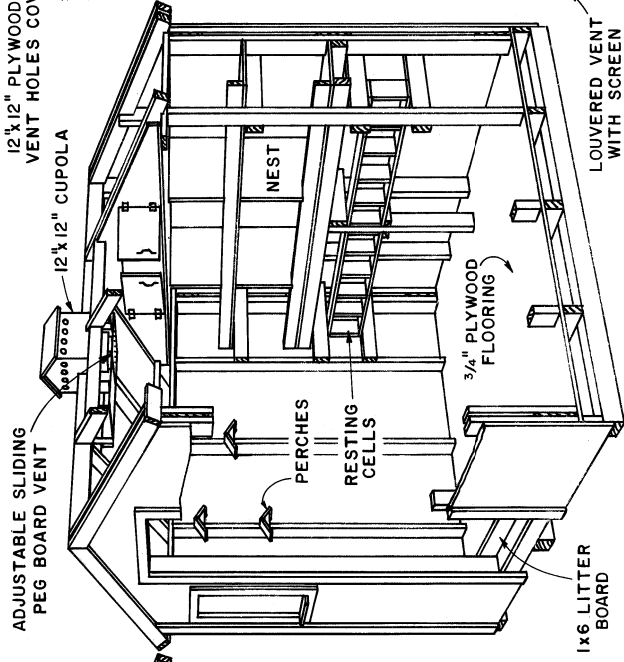
**CUTAWAY VIEW**  
OF 8x8' LAYING HOUSE

NOTE:  
CAPACITY 15-20 HENS  
4-NESTS  
ROOST & STORAGE AREAS.

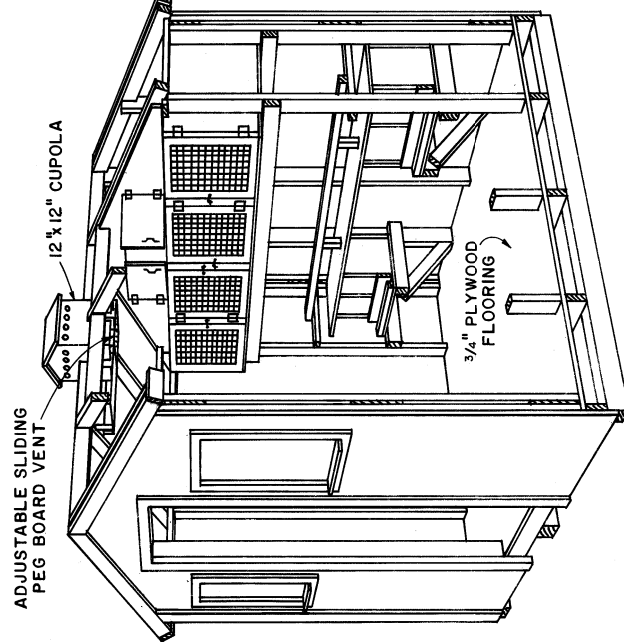


SECTION OF PIGEON HOUSE

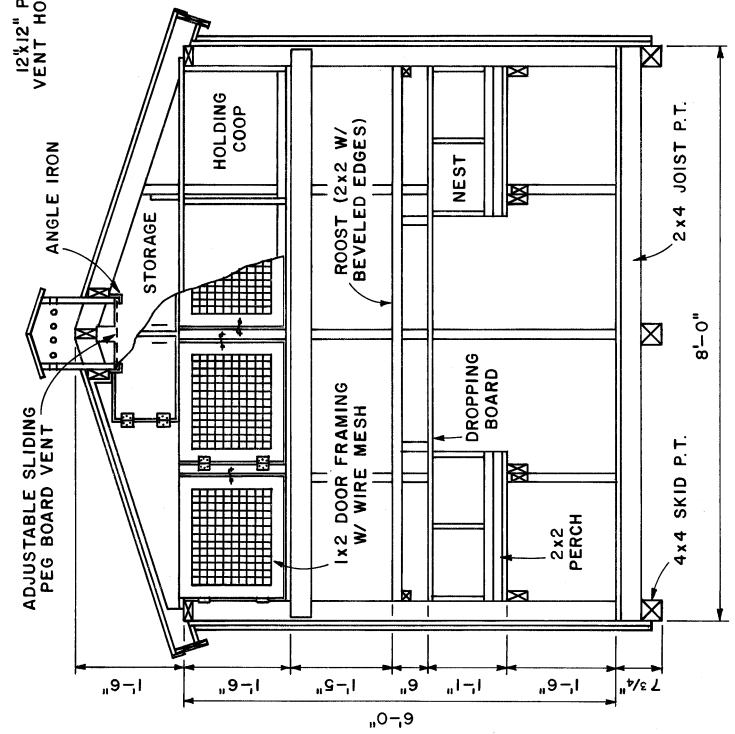
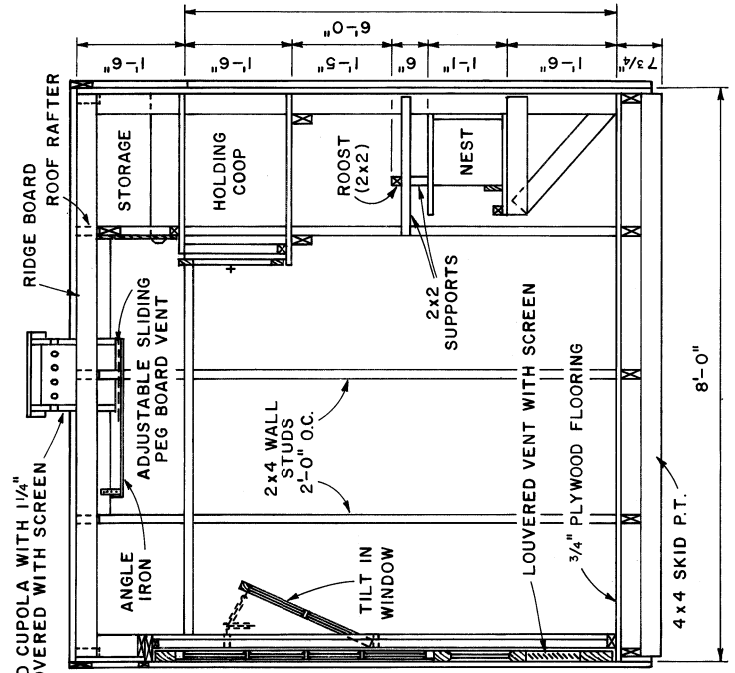
NOTE:  
P.T. = PRESSURE TREATED.



PERSPECTIVE OF PIGEON HOUSE



PERSPECTIVE OF CHICKEN HOUSE - BANTAMS



SECTIONS OF CHICKEN HOUSE - BANTAMS